

E-Gun

Pre-wired, rapid-arming perforating gun

E-Gun is a pre-wired, plug-and-play perforating gun that eliminates wire connections and tandem sub maintenance by the user. E-Gun accepts all standard-loading shaped charges and features ControlFire® Cartridge technology, simplifying the arming process.

Benefits

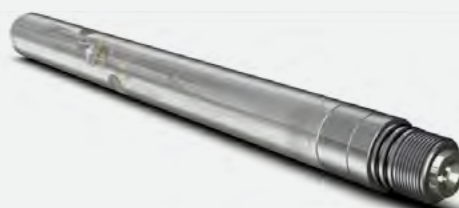
- Fast, wire-free arming
- No field wire connectionsGun applications from 2" through 3-3/8" OD
- Cost effective plug-and-play system

Features

- Utilizes ESUB® with ControlFire® Cartridge
- Pre-wired and pre-assembled
- Available in a variety of gun lengths
- Uses standard-loading shaped charges

Typical Applications

- Perforation / Selective Perforation



Specifications

Mechanical	Outside Diameter (O.D.)				
	2"	2-1/2"	2-3/4"	3-1/8"	3-3/8"
Nominal O.D. (in)[mm]	2.03 [52]	2.50 [64]	2.75 [70]	3.13 [79]	3.38 [86]
Nominal Thickness (in)[mm]	0.21 [5.3]	0.25 [6.4]	0.31 [8.0]	0.31 [7.9]	0.37 [9.4]
Typical Gun Swell (in)[mm]	4/0° 216 [55]	2.71 [69] @ 11.0g	2.96 [75]	3.31 [84]	3.61 [92]
Ambient Liquid Conditions	6/60° 219 [56]	2.69 [68] @ 11.0g	2.97 [75]	3.28 [83]	3.58 [91]
Min. I.D. Running Restriction (in)[mm]	2.25 [57]	2.71 [69]	3.05 [77]	3.58 [91]	3.80 [97]
Drift Gauge O.D. for Gun Body I.D. (in)[mm] using Gauge Length 12 in [305]	1.58 [40]	1.98 [50]	2.07 [53]	2.44 [62]	2.56 [65]
Min. Washover Pipe Clearance:				0.38 [10]	
Casing Drift I.D. to Nominal Washover O.D.				0.31 [8]	
Washover Drift I.D. to Nominal Guns O.D.					
Min. Detonating Cord Velocity (ft/s) [m/s]	22,000 [6,700]	21,000 [6,400]	22,000 [6,700]	23,600 [7,200]	
Upper & Lower Head Connection	1-11/16"-8 Stub Acme	2-1/8"-8 Acme	2-3/8"-6 Acme	2-3/4"-6 Acme	2-13/16"-6 Acme
Max. Tension (lbf) [kN]	135,000 [601]	80,000 [356]	75,000 [334]	100,000 [445]	
Environmental	2"	2-1/2"	2-3/4"	3-1/8"	3-3/8"
	4/0°	13,000 [90]	20,000 [55]	20,000 [138]	20,000 [138]
Pressure Rating (psi) [MPa]	6/60° 13,000 [90]	13,000 [90]	20,000 [55]	20,000 [138]	18,000 [124]
Electrical					
Firing Capability	ControlFire®				
Maximum Voltage Rating	Forward - 550V / 15 sec Reverse - 550V / 30 sec				
Maximum Firing Current	Forward (Nominal) - 1A / 12 sec Forward (Maximum) - 1.5A / 5 sec				

Technology by Hunting PLC